



RIBA STAGE 0-3: NOT FOR CONSTRUCTION

THIS DRAWING HAS BEEN PREPARED FOR PRELIMINARY INFORMATION ONLY. THE DESIGN INFORMATION AND ALL ASSOCIATED AREAS IS SUBJECT TO MEASURED SURVEY, DESIGN DEVELOPMENT, STATUTORY UNDERTAKER SEARCHES, PLANNING APPROVAL, DETAILED DESIGN DEVELOPMENT, BUILDING REGULATIONS APPROVAL, FIRE ENGINEER REVIEW AND ASSESSMENT BY A STRUCTURAL ENGINEER. THIS DRAWING DOES NOT IMPLY CONFIRMATION OF LEGAL BOUNDARIES OR TITLE.

INFORMATION CONTAINED IN THIS DRAWING IS THE SOLE COPYRIGHT OF METASHAPE ARCHITECTS LTD AND IS NOT TO BE REPRODUCED WITHOUT PERMISSION. DO NOT SCALE. REFER TO FIGURED DIMENSIONS ONLY.

KEY

-  Existing building fabric
-  Proposed new walls

METASHAPE | ARCHITECTS

STATUS
PLANNING

PROJECT
66a HIGH STREET
NEW MALDEN KT3 4ET

SHEET TITLE
SITE PLAN PROPOSED

SCALE
As indicated @ A1

DATE
12/03/25

DRAWN
LL

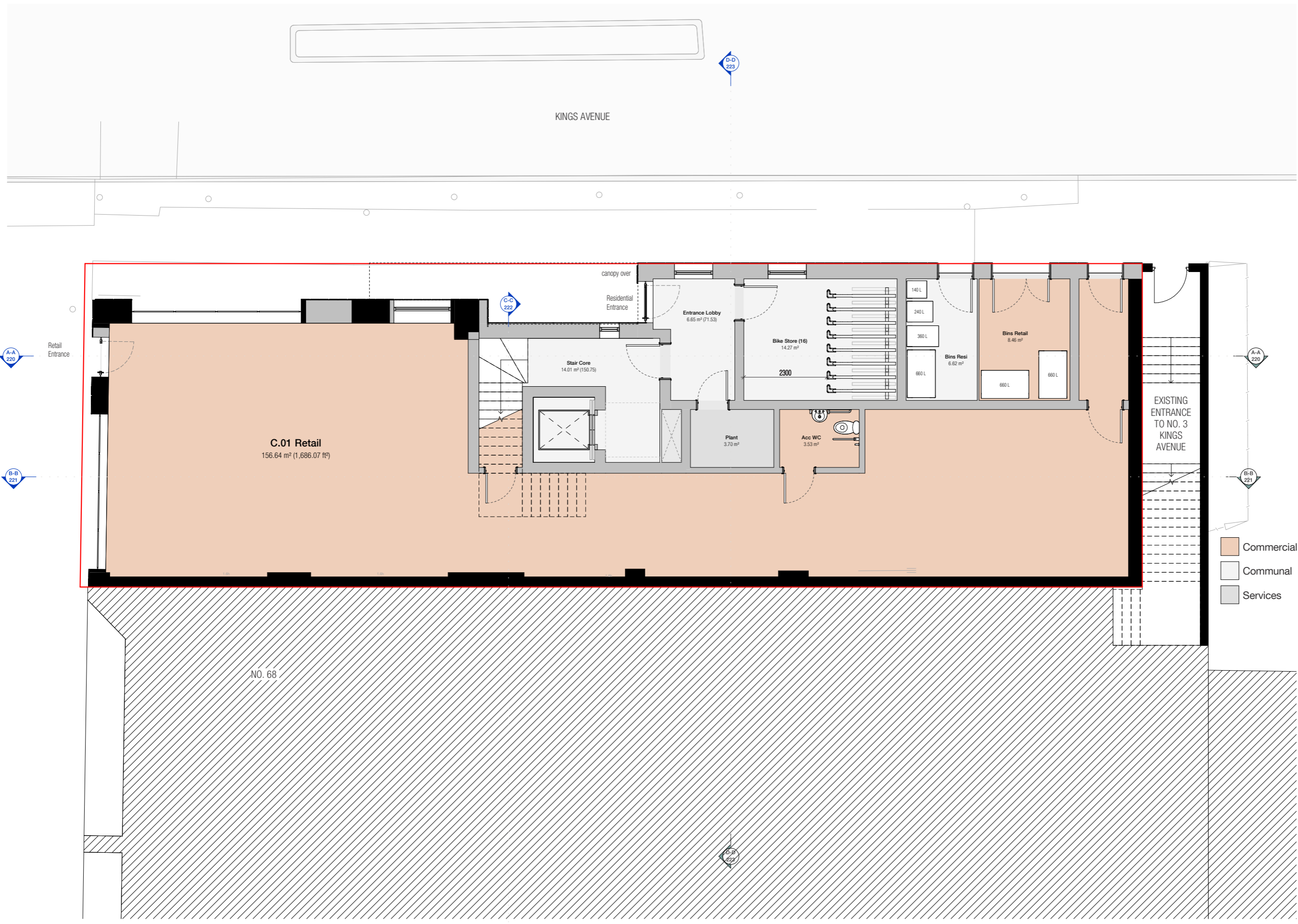
REVIEWED
IL

JOB NO.
2022-012

SHEET NUMBER
200

REVISION
A





- Commercial
- Communal
- Services

RIBA STAGE 0-3: NOT FOR CONSTRUCTION

THIS DRAWING HAS BEEN PREPARED FOR PRELIMINARY INFORMATION ONLY. THE DESIGN INFORMATION AND ALL ASSOCIATED AREAS IS SUBJECT TO MEASURED SURVEY, DESIGN DEVELOPMENT, STATUTORY UNDERTAKER SEARCHES, PLANNING APPROVAL, DETAILED DESIGN DEVELOPMENT, BUILDING REGULATIONS APPROVAL, FIRE ENGINEER REVIEW AND ASSESSMENT BY A STRUCTURAL ENGINEER. THIS DRAWING DOES NOT IMPLY CONFIRMATION OF LEGAL BOUNDARIES OR TITLE.

INFORMATION CONTAINED IN THIS DRAWING IS THE SOLE COPYRIGHT OF METASHAPE ARCHITECTS LTD AND IS NOT TO BE REPRODUCED WITHOUT PERMISSION. DO NOT SCALE. REFER TO FIGURED DIMENSIONS ONLY.

- KEY**
- Existing building fabric
 - Proposed new walls

METASHAPE | ARCHITECTS

STATUS
 PLANNING

PROJECT
 66a HIGH STREET
 NEW MALDEN KT3 4ET

SHEET TITLE
 GROUND FLOOR PROPOSED

SCALE
 1 : 50 @ A1

DATE
 12/03/25

DRAWN
 LL

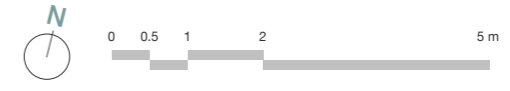
REVIEWED
 IL

JOB NO.
 2022-012

SHEET NUMBER
 201

REVISION
 A

Ground Floor Proposed
 1 : 50





- 2B
- 3B
- Amenity

RIBA STAGE 0-3: NOT FOR CONSTRUCTION

THIS DRAWING HAS BEEN PREPARED FOR PRELIMINARY INFORMATION ONLY. THE DESIGN INFORMATION AND ALL ASSOCIATED AREAS IS SUBJECT TO MEASURED SURVEY, DESIGN DEVELOPMENT, STATUTORY UNDERTAKER SEARCHES, PLANNING APPROVAL, DETAILED DESIGN DEVELOPMENT, BUILDING REGULATIONS APPROVAL, FIRE ENGINEER REVIEW AND ASSESSMENT BY A STRUCTURAL ENGINEER. THIS DRAWING DOES NOT IMPLY CONFIRMATION OF LEGAL BOUNDARIES OR TITLE.

INFORMATION CONTAINED IN THIS DRAWING IS THE SOLE COPYRIGHT OF METASHAPE ARCHITECTS LTD AND IS NOT TO BE REPRODUCED WITHOUT PERMISSION. DO NOT SCALE. REFER TO FIGURED DIMENSIONS ONLY.

KEY

- Existing building fabric
- Proposed new walls

METASHAPE | ARCHITECTS

STATUS
 PLANNING

PROJECT
 66a HIGH STREET
 NEW MALDEN KT3 4ET

SHEET TITLE
 FIRST FLOOR PROPOSED

SCALE
 1 : 50 @ A1

DATE
 12/03/25

DRAWN
 LL

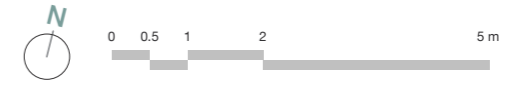
REVIEWED
 IL

JOB NO.
 2022-012

SHEET NUMBER
 202

REVISION
 A

First Floor Proposed
 1 : 50



REVISIONS		
A	Planning Issue	20/06/25
B	Materials & balconies revised in accordance with planning officer comments	19/11/25
C	Balconies re-instated and parapet adjusted in-line with further comments from the planning officer	10/02/26



- 2B
- 3B
- Amenity

RIBA STAGE 0-3: NOT FOR CONSTRUCTION

THIS DRAWING HAS BEEN PREPARED FOR PRELIMINARY INFORMATION ONLY. THE DESIGN INFORMATION AND ALL ASSOCIATED AREAS IS SUBJECT TO MEASURED SURVEY, DESIGN DEVELOPMENT, STATUTORY UNDERTAKER SEARCHES, PLANNING APPROVAL, DETAILED DESIGN DEVELOPMENT, BUILDING REGULATIONS APPROVAL, FIRE ENGINEER REVIEW AND ASSESSMENT BY A STRUCTURAL ENGINEER. THIS DRAWING DOES NOT IMPLY CONFIRMATION OF LEGAL BOUNDARIES OR TITLE.

INFORMATION CONTAINED IN THIS DRAWING IS THE SOLE COPYRIGHT OF METASHAPE ARCHITECTS LTD AND IS NOT TO BE REPRODUCED WITHOUT PERMISSION. DO NOT SCALE. REFER TO FIGURED DIMENSIONS ONLY.

- KEY**
- Existing building fabric
 - Proposed new walls

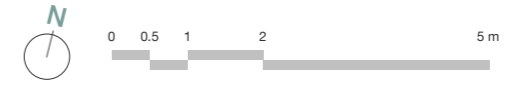
METASHAPE | ARCHITECTS

STATUS
PLANNING

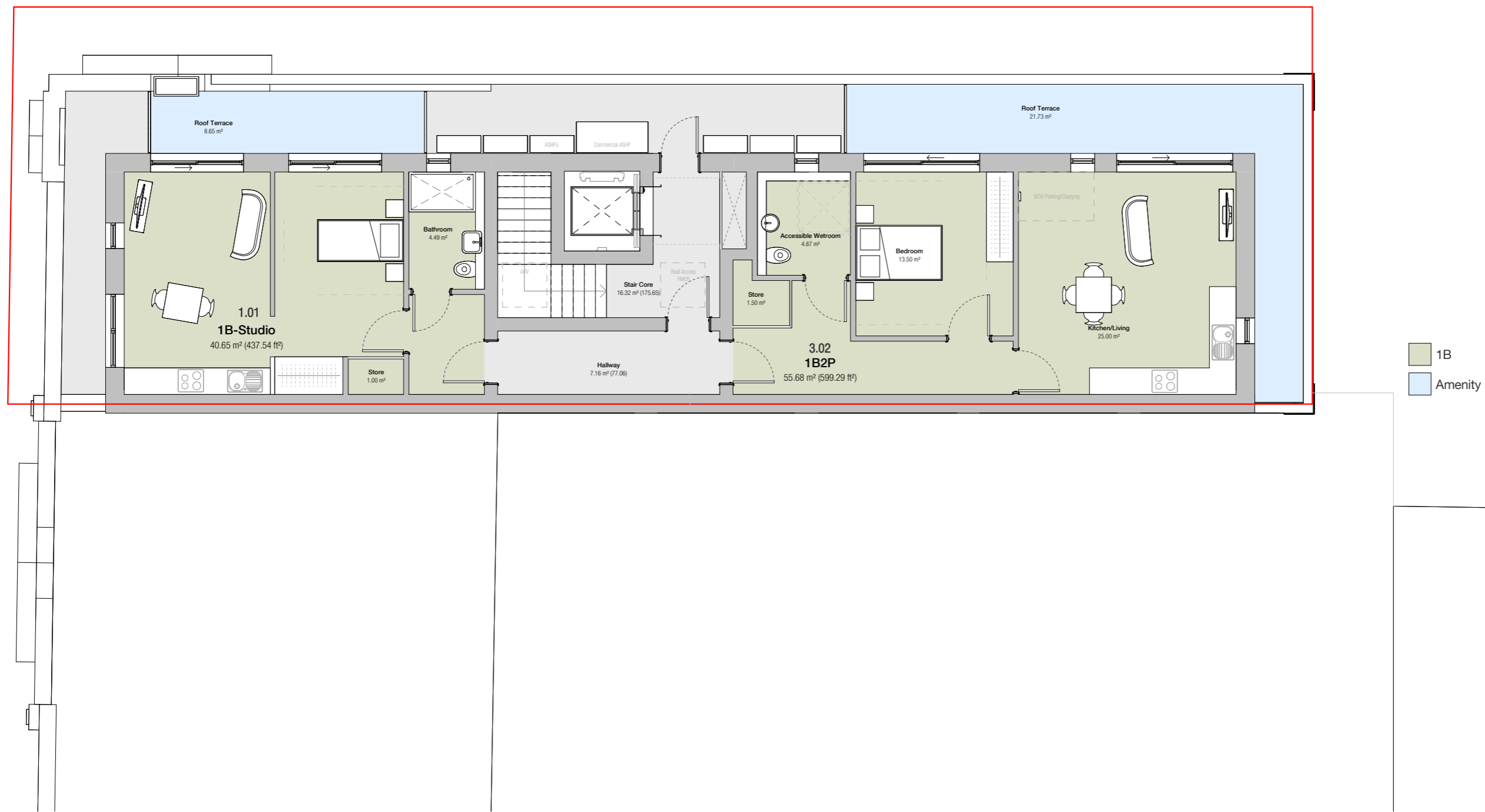
PROJECT
66a HIGH STREET
NEW MALDEN KT3 4ET

SHEET TITLE
SECOND FLOOR PROPOSED

SCALE 1 : 50 @ A1	DATE 12/03/25
DRAWN LL	REVIEWED IL
JOB NO. 2022-012	
SHEET NUMBER 203	REVISION C



REVISIONS		
A	Planning Issue	20/06/25
B	Balconies re-instated and parapet adjusted in-line with further comments from the planning officer	10/02/26



RIBA STAGE 0-3: NOT FOR CONSTRUCTION

THIS DRAWING HAS BEEN PREPARED FOR PRELIMINARY INFORMATION ONLY. THE DESIGN INFORMATION AND ALL ASSOCIATED AREAS IS SUBJECT TO MEASURED SURVEY, DESIGN DEVELOPMENT, STATUTORY UNDERTAKER SEARCHES, PLANNING APPROVAL, DETAILED DESIGN DEVELOPMENT, BUILDING REGULATIONS APPROVAL, FIRE ENGINEER REVIEW AND ASSESSMENT BY A STRUCTURAL ENGINEER. THIS DRAWING DOES NOT IMPLY CONFIRMATION OF LEGAL BOUNDARIES OR TITLE.

INFORMATION CONTAINED IN THIS DRAWING IS THE SOLE COPYRIGHT OF METASHAPE ARCHITECTS LTD AND IS NOT TO BE REPRODUCED WITHOUT PERMISSION. DO NOT SCALE. REFER TO FIGURED DIMENSIONS ONLY.

KEY

	Existing building fabric
	Proposed new walls

METASHAPE | ARCHITECTS

STATUS
PLANNING

PROJECT
66a HIGH STREET
NEW MALDEN KT3 4ET

SHEET TITLE
THIRD FLOOR PROPOSED

SCALE 1 : 50 @ A1	DATE 12/03/25
----------------------	------------------

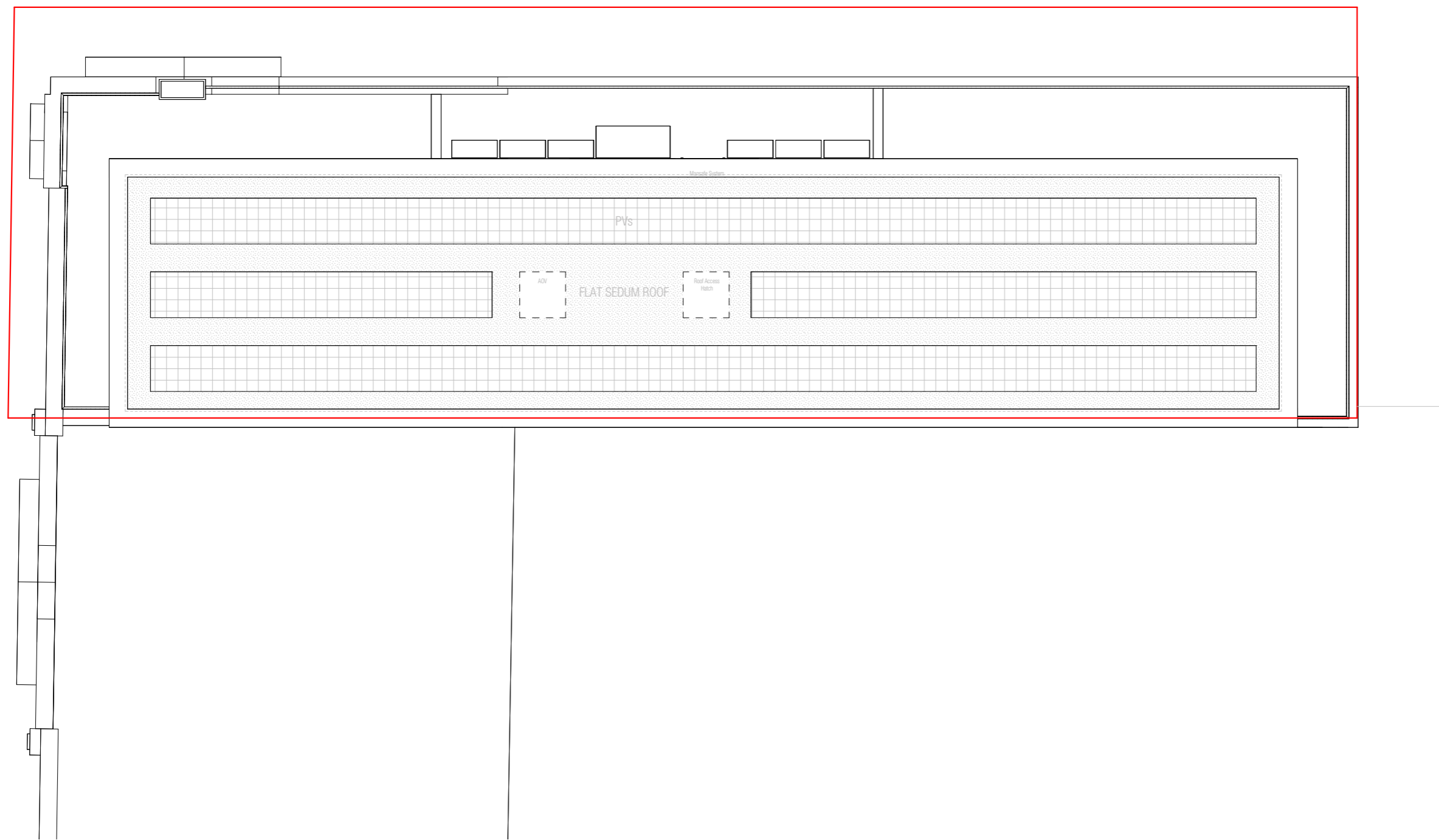
DRAWN LL	REVIEWED IL
-------------	----------------

JOB NO.
2022-012

SHEET NUMBER 204	REVISION B
----------------------------	---------------

Third Floor Proposed
1 : 50





METASHAPE | ARCHITECTS

STATUS
PLANNING

PROJECT
66a HIGH STREET
NEW MALDEN KT3 4ET

SHEET TITLE
ROOF PROPOSED

SCALE
1 : 50 @ A1

DATE
25/04/25

DRAWN
LL

REVIEWED
IL

JOB NO.
2022-012

SHEET NUMBER
205

REVISION
A



REVISIONS		
A	Planning Issue	20/06/25
B	Materials & balconies revised in accordance with planning officer comments	19/11/25
C	Balconies re-instated and parapet adjusted in-line with further comments from the planning officer	10/02/26



High Street Elevation Proposed

1 : 100

RIBA STAGE 0-3: NOT FOR CONSTRUCTION

THIS DRAWING HAS BEEN PREPARED FOR PRELIMINARY INFORMATION ONLY. THE DESIGN INFORMATION AND ALL ASSOCIATED AREAS IS SUBJECT TO MEASURED SURVEY, DESIGN DEVELOPMENT, STATUTORY UNDERTAKEER SEARCHES, PLANNING APPROVAL, DETAILED DESIGN DEVELOPMENT, BUILDING REGULATIONS APPROVAL, FIRE ENGINEER REVIEW AND ASSESSMENT BY A STRUCTURAL ENGINEER. THIS DRAWING DOES NOT IMPLY CONFIRMATION OF LEGAL BOUNDARIES OR TITLE.

INFORMATION CONTAINED IN THIS DRAWING IS THE SOLE COPYRIGHT OF METASHAPE ARCHITECTS LTD AND IS NOT TO BE REPRODUCED WITHOUT PERMISSION. REFER TO FIGURED DIMENSIONS ONLY.

Key Plan



Kings Avenue Elevation Proposed

1 : 100

METASHAPE | ARCHITECTS

STATUS
PLANNING

PROJECT
66a HIGH STREET
NEW MALDEN KT3 4ET

SHEET TITLE
CONTEXT ELEVATIONS PROPOSED

SCALE
As indicated @ A1

DATE
25/04/25

DRAWN
LL

REVIEWED
IL

JOB NO.
2022-012

SHEET NUMBER
214

REVISION
C



REVISIONS		
A	Planning Issue	20/06/25
B	Materials & balconies revised in accordance with planning officer comments	19/11/25
C	Balconies re-instated and parapet adjusted in-line with further comments from the planning officer	10/02/26

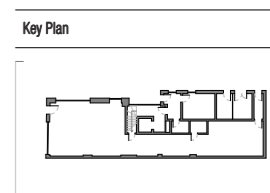


- Materials**
- ① - Red Brick - Light
 - ② - Red Brick - Dark
 - ③ - Ceramic Tile - Entrance
 - ④ - Ceramic Tile - Banding
 - ⑤ - Metal Railing
 - ⑥ - Aluminium and glazed retail frontage
 - ⑦ - Aluminium Casement Windows
 - ⑧ - Zinc Cladding
 - ⑨ - Stone Facade
 - ⑩ - Recessed Brick

RIBA STAGE 0-3: NOT FOR CONSTRUCTION

THIS DRAWING HAS BEEN PREPARED FOR PRELIMINARY INFORMATION ONLY. THE DESIGN INFORMATION AND ALL ASSOCIATED AREAS IS SUBJECT TO MEASURED SURVEY, DESIGN DEVELOPMENT, STATUTORY UNDERTAKER SEARCHES, PLANNING APPROVAL, DETAILED DESIGN DEVELOPMENT, BUILDING REGULATIONS APPROVAL, FIRE ENGINEER REVIEW AND ASSESSMENT BY A STRUCTURAL ENGINEER. THIS DRAWING DOES NOT IMPLY CONFIRMATION OF LEGAL BOUNDARIES OR TITLE.

INFORMATION CONTAINED IN THIS DRAWING IS THE SOLE COPYRIGHT OF METASHAPE ARCHITECTS LTD AND IS NOT TO BE REPRODUCED WITHOUT PERMISSION. REFER TO FIGURED DIMENSIONS ONLY.



METASHAPE | ARCHITECTS

STATUS
PLANNING

PROJECT
66a HIGH STREET
NEW MALDEN KT3 4ET

SHEET TITLE
ELEVATIONS PROPOSED W

SCALE
As indicated @ A1

DATE
25/04/25

DRAWN
LL

REVIEWED
IL

JOB NO.
2022-012

SHEET NUMBER
210

REVISION
C



REVISIONS		
A	Planning Issue	20/06/25
B	Materials & balconies revised in accordance with planning officer comments	19/11/25
C	Balconies re-instated and parapet adjusted in-line with further comments from the planning officer	10/02/26

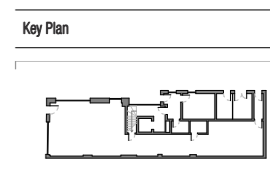


- Materials**
- ① - Red Brick - Light
 - ② - Red Brick - Dark
 - ③ - Ceramic Tile - Entrance
 - ④ - Ceramic Tile - Banding
 - ⑤ - Metal Railing
 - ⑥ - Aluminium and glazed retail frontage
 - ⑦ - Aluminium Casement Windows
 - ⑧ - Zinc Cladding
 - ⑨ - Stone Facade
 - ⑩ - Recessed Brick

RIBA STAGE 0-3: NOT FOR CONSTRUCTION

THIS DRAWING HAS BEEN PREPARED FOR PRELIMINARY INFORMATION ONLY. THE DESIGN INFORMATION AND ALL ASSOCIATED AREAS IS SUBJECT TO MEASURED SURVEY, DESIGN DEVELOPMENT, STATUTORY UNDERTAKER SEARCHES, PLANNING APPROVAL, DETAILED DESIGN DEVELOPMENT, BUILDING REGULATIONS APPROVAL, FIRE ENGINEER REVIEW AND ASSESSMENT BY A STRUCTURAL ENGINEER. THIS DRAWING DOES NOT IMPLY CONFIRMATION OF LEGAL BOUNDARIES OR TITLE.

INFORMATION CONTAINED IN THIS DRAWING IS THE SOLE COPYRIGHT OF METASHAPE ARCHITECTS LTD AND IS NOT TO BE REPRODUCED WITHOUT PERMISSION. REFER TO FIGURED DIMENSIONS ONLY.



METASHAPE | ARCHITECTS

STATUS
PLANNING

PROJECT
66a HIGH STREET
NEW MALDEN KT3 4ET

SHEET TITLE
ELEVATIONS PROPOSED N

SCALE
As indicated @ A1

DATE
25/04/25

DRAWN
LL

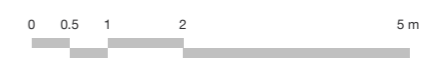
REVIEWED
IL

JOB NO.
2022-012

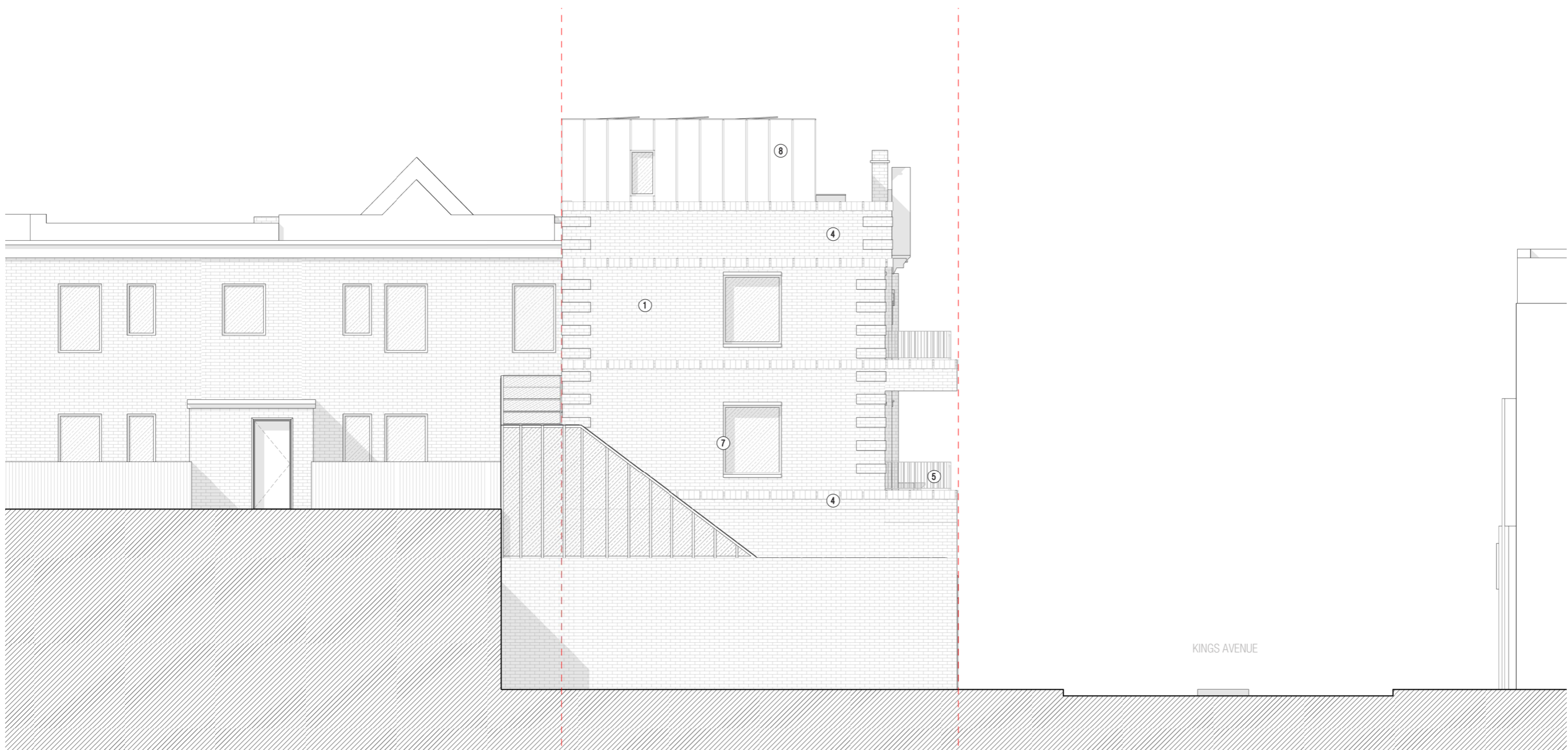
SHEET NUMBER
211

REVISION
C

North Elevation Proposed
1 : 50



REVISIONS		
A	Planning Issue	20/06/25
B	Materials & balconies revised in accordance with planning officer comments	19/11/25
C	Balconies re-instated and parapet adjusted in-line with further comments from the planning officer	10/02/26

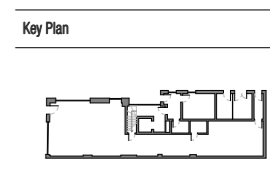


- Materials**
- ① - Red Brick - Light
 - ② - Red Brick - Dark
 - ③ - Ceramic Tile - Entrance
 - ④ - Ceramic Tile - Banding
 - ⑤ - Metal Railing
 - ⑥ - Aluminium and glazed retail frontage
 - ⑦ - Aluminium Casement Windows
 - ⑧ - Zinc Cladding
 - ⑨ - Stone Facade
 - ⑩ - Recessed Brick

RIBA STAGE 0-3: NOT FOR CONSTRUCTION

THIS DRAWING HAS BEEN PREPARED FOR PRELIMINARY INFORMATION ONLY. THE DESIGN INFORMATION AND ALL ASSOCIATED AREAS IS SUBJECT TO MEASURED SURVEY, DESIGN DEVELOPMENT, STATUTORY UNDERTAKER SEARCHES, PLANNING APPROVAL, DETAILED DESIGN DEVELOPMENT, BUILDING REGULATIONS APPROVAL, FIRE ENGINEER REVIEW AND ASSESSMENT BY A STRUCTURAL ENGINEER. THIS DRAWING DOES NOT IMPLY CONFIRMATION OF LEGAL BOUNDARIES OR TITLE.

INFORMATION CONTAINED IN THIS DRAWING IS THE SOLE COPYRIGHT OF METASHAPE ARCHITECTS LTD AND IS NOT TO BE REPRODUCED WITHOUT PERMISSION. REFER TO FIGURED DIMENSIONS ONLY.



METASHAPE | ARCHITECTS

STATUS
PLANNING

PROJECT
66a HIGH STREET
NEW MALDEN KT3 4ET

SHEET TITLE
ELEVATIONS PROPOSED E

SCALE
As indicated @ A1

DATE
15/04/25

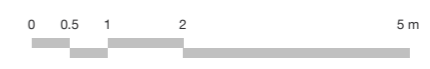
DRAWN
LL

REVIEWED
IL

JOB NO.
2022-012

SHEET NUMBER
212

REVISION
C



REVISIONS		
A	Planning Issue	20/06/25
B	Materials & balconies revised in accordance with planning officer comments	19/11/25
C	Balconies re-instated and parapet adjusted in-line with further comments from the planning officer	10/02/26

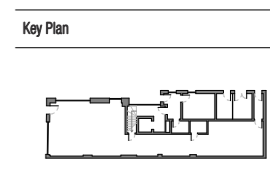


- Materials**
- ① - Red Brick - Light
 - ② - Red Brick - Dark
 - ③ - Ceramic Tile - Entrance
 - ④ - Ceramic Tile - Banding
 - ⑤ - Metal Railing
 - ⑥ - Aluminium and glazed retail frontage
 - ⑦ - Aluminium Casement Windows
 - ⑧ - Zinc Cladding
 - ⑨ - Stone Facade
 - ⑩ - Recessed Brick

RIBA STAGE 0-3: NOT FOR CONSTRUCTION

THIS DRAWING HAS BEEN PREPARED FOR PRELIMINARY INFORMATION ONLY. THE DESIGN INFORMATION AND ALL ASSOCIATED AREAS IS SUBJECT TO MEASURED SURVEY, DESIGN DEVELOPMENT, STATUTORY UNDERTAKER SEARCHES, PLANNING APPROVAL, DETAILED DESIGN DEVELOPMENT, BUILDING REGULATIONS APPROVAL, FIRE ENGINEER REVIEW AND ASSESSMENT BY A STRUCTURAL ENGINEER. THIS DRAWING DOES NOT IMPLY CONFIRMATION OF LEGAL BOUNDARIES OR TITLE.

INFORMATION CONTAINED IN THIS DRAWING IS THE SOLE COPYRIGHT OF METASHAPE ARCHITECTS LTD AND IS NOT TO BE REPRODUCED WITHOUT PERMISSION. REFER TO FIGURED DIMENSIONS ONLY.



METASHAPE | ARCHITECTS

STATUS
PLANNING

PROJECT
66a HIGH STREET
NEW MALDEN KT3 4ET

SHEET TITLE
ELEVATIONS PROPOSED S

SCALE
As indicated @ A1

DATE
15/04/25

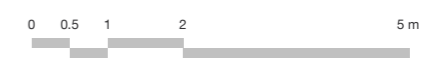
DRAWN
LL

REVIEWED
IL

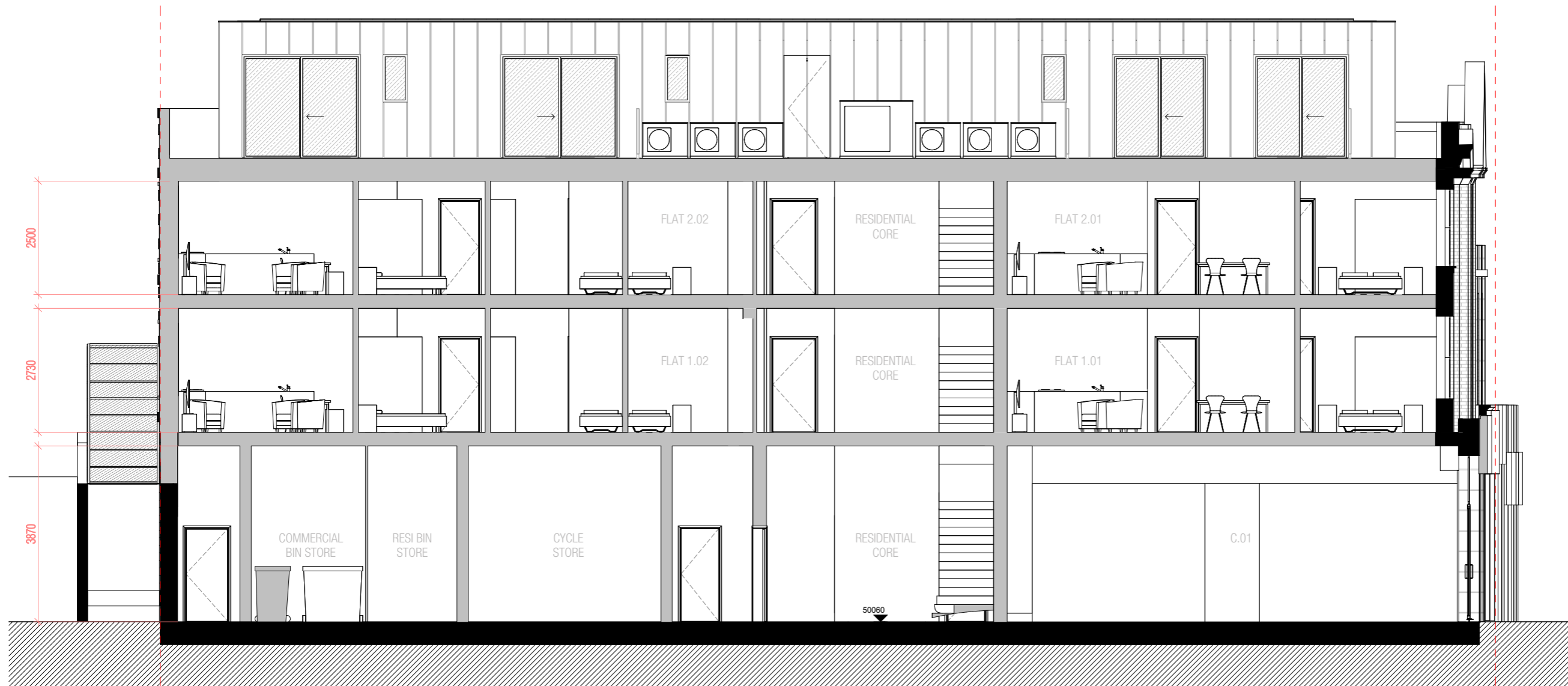
JOB NO.
2022-012

SHEET NUMBER
213

REVISION
C



REVISIONS	
A	Planning Issue 20/06/25
B	Floor-Ceiling Dimensions 03/11/25
C	Materials & balconies revised in accordance with planning officer comments 19/11/25
D	Balconies re-installed and parapet adjusted in-line with further comments from the planning officer 10/02/26



RIBA STAGE 0-3: NOT FOR CONSTRUCTION

THIS DRAWING HAS BEEN PREPARED FOR PRELIMINARY INFORMATION ONLY. THE DESIGN INFORMATION AND ALL ASSOCIATED AREAS IS SUBJECT TO MEASURED SURVEY, DESIGN DEVELOPMENT, STATUTORY UNDERTAKER SEARCHES, PLANNING APPROVAL, DETAILED DESIGN DEVELOPMENT, BUILDING REGULATIONS APPROVAL, FIRE ENGINEER REVIEW AND ASSESSMENT BY A STRUCTURAL ENGINEER. THIS DRAWING DOES NOT IMPLY CONFIRMATION OF LEGAL BOUNDARIES OR TITLE.

INFORMATION CONTAINED IN THIS DRAWING IS THE SOLE COPYRIGHT OF METASHAPE ARCHITECTS LTD AND IS NOT TO BE REPRODUCED WITHOUT PERMISSION. REFER TO FIGURED DIMENSIONS ONLY.

Key Plan



- Existing building fabric
- Proposed new walls

METASHAPE | ARCHITECTS

STATUS
PLANNING

PROJECT
66a HIGH STREET
NEW MALDEN KT3 4ET

SHEET TITLE
SECTION A-A PROPOSED

SCALE
As indicated @ A1

DATE
25/04/25

DRAWN
LL

REVIEWED
IL

JOB NO.
2022-012

SHEET NUMBER
220

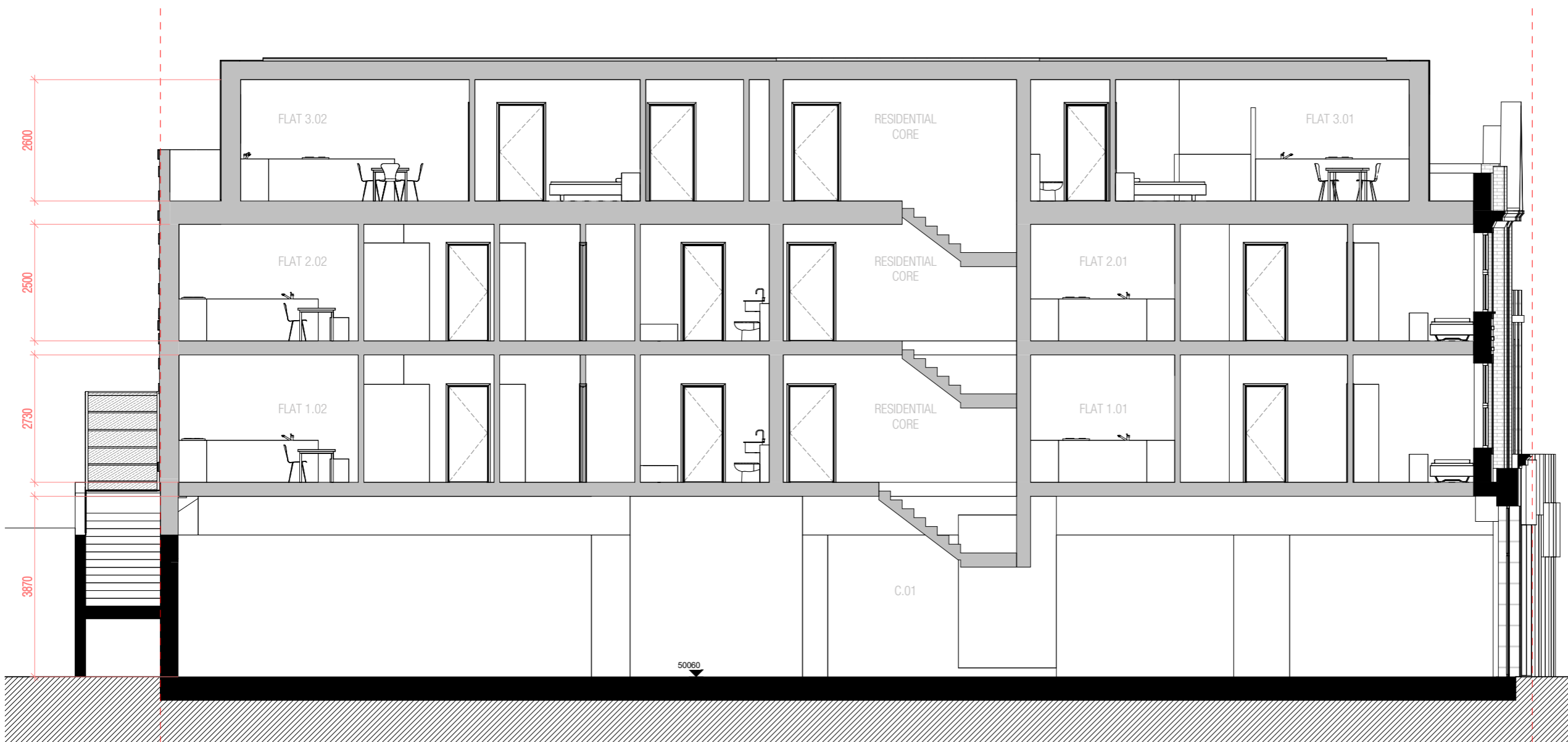
REVISION
D

Section A-A Proposed

1 : 50



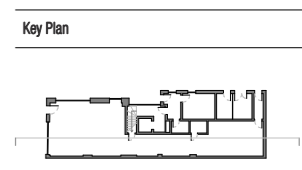
REVISIONS	
A	Planning Issue 20/06/25
B	Floor-Ceiling Dimensions 03/11/25
C	Materials & balconies revised in accordance with planning officer comments 19/11/25
D	Balconies re-installed and parapet adjusted in-line with further comments from the planning officer 10/02/26



RIBA STAGE 0-3: NOT FOR CONSTRUCTION

THIS DRAWING HAS BEEN PREPARED FOR PRELIMINARY INFORMATION ONLY. THE DESIGN INFORMATION AND ALL ASSOCIATED AREAS IS SUBJECT TO MEASURED SURVEY, DESIGN DEVELOPMENT, STATUTORY UNDERTAKER SEARCHES, PLANNING APPROVAL, DETAILED DESIGN DEVELOPMENT, BUILDING REGULATIONS APPROVAL, FIRE ENGINEER REVIEW AND ASSESSMENT BY A STRUCTURAL ENGINEER. THIS DRAWING DOES NOT IMPLY CONFIRMATION OF LEGAL BOUNDARIES OR TITLE.

INFORMATION CONTAINED IN THIS DRAWING IS THE SOLE COPYRIGHT OF METASHAPE ARCHITECTS LTD AND IS NOT TO BE REPRODUCED WITHOUT PERMISSION. REFER TO FIGURED DIMENSIONS ONLY.



- Existing building fabric
- Proposed new walls

METASHAPE | ARCHITECTS

STATUS
PLANNING

PROJECT
66a HIGH STREET
NEW MALDEN KT3 4ET

SHEET TITLE
SECTION B-B PROPOSED

SCALE
As indicated @ A1

DATE
25/04/25

DRAWN
LL

REVIEWED
IL

JOB NO.
2022-012

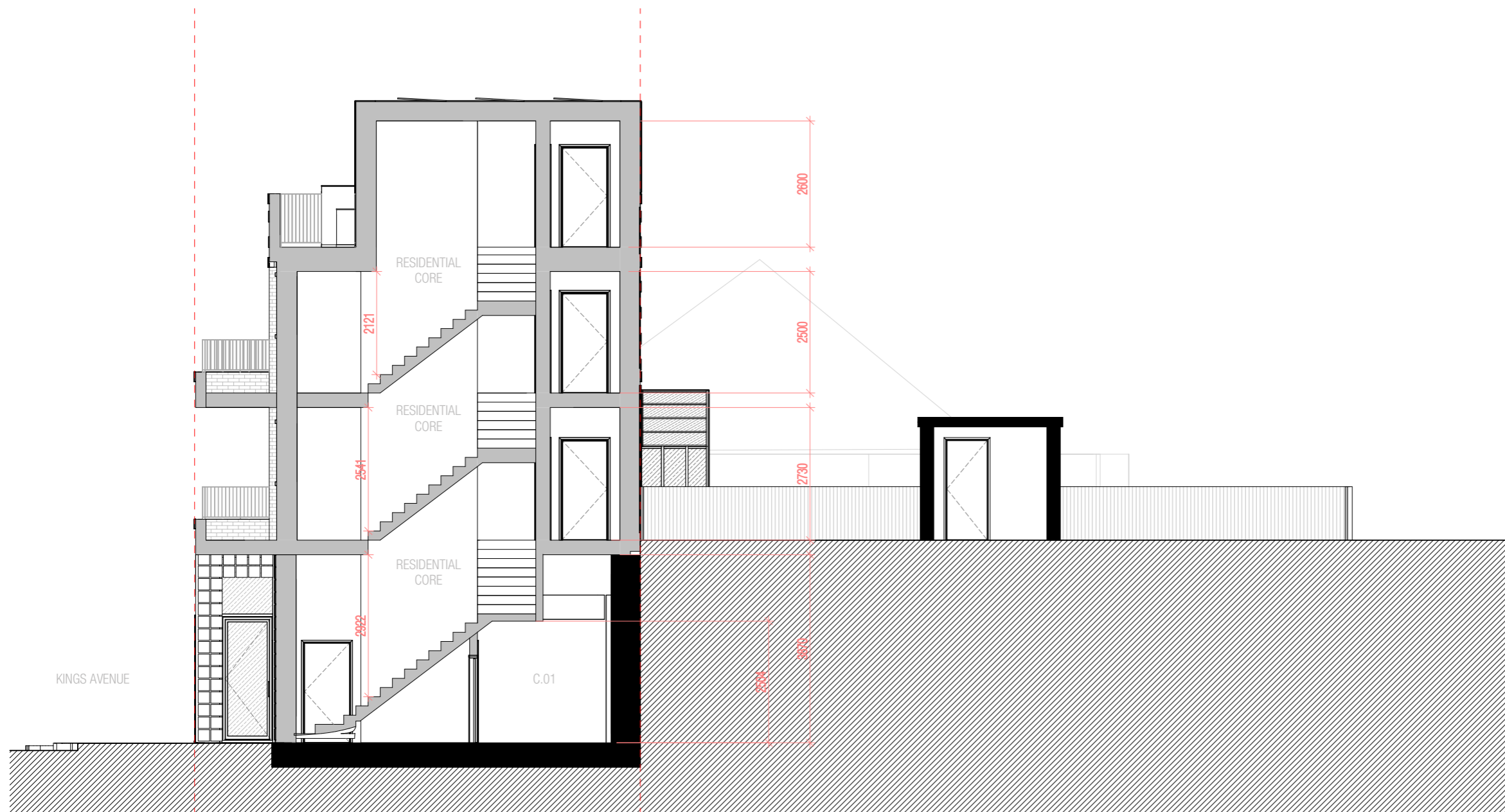
SHEET NUMBER
221

REVISION
D

Section B-B Proposed
1 : 50



REVISIONS	
A	Planning Issue 20/06/25
B	Floor-Ceiling Dimensions 03/11/25
C	Materials & balconies revised in accordance with planning officer comments 19/11/25
D	Balconies re-installed and parapet adjusted in-line with further comments from the planning officer 10/02/26

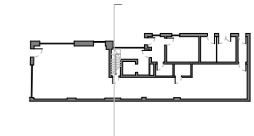




RIBA STAGE 0-3: NOT FOR CONSTRUCTION

THIS DRAWING HAS BEEN PREPARED FOR PRELIMINARY INFORMATION ONLY. THE DESIGN INFORMATION AND ALL ASSOCIATED AREAS IS SUBJECT TO MEASURED SURVEY, DESIGN DEVELOPMENT, STATUTORY UNDERTAKER SEARCHES, PLANNING APPROVAL, DETAILED DESIGN DEVELOPMENT, BUILDING REGULATIONS APPROVAL, FIRE ENGINEER REVIEW AND ASSESSMENT BY A STRUCTURAL ENGINEER. THIS DRAWING DOES NOT IMPLY CONFIRMATION OF LEGAL BOUNDARIES OR TITLE.

INFORMATION CONTAINED IN THIS DRAWING IS THE SOLE COPYRIGHT OF METASHAPE ARCHITECTS LTD AND IS NOT TO BE REPRODUCED WITHOUT PERMISSION. REFER TO FIGURED DIMENSIONS ONLY.

Key Plan



-  Existing building fabric
-  Proposed new walls

METASHAPE | ARCHITECTS

STATUS
PLANNING

PROJECT
66a HIGH STREET
NEW MALDEN KT3 4ET

SHEET TITLE
SECTION C-C PROPOSED

SCALE
As indicated @ A1

DATE
12/03/25

DRAWN
LL

REVIEWED
IL

JOB NO.
2022-012

SHEET NUMBER
222

REVISION
D

Section C-C Proposed

1 : 50



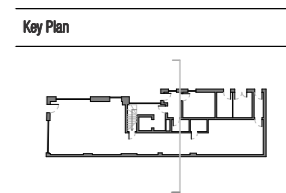
REVISIONS	
A	Planning Issue 20/06/25
B	Floor-Ceiling Dimensions 03/11/25
C	Materials & balconies revised in accordance with planning officer comments 19/11/25
D	Balconies re-installed and parapet adjusted in-line with further comments from the planning officer 10/02/26



RIBA STAGE 0-3: NOT FOR CONSTRUCTION

THIS DRAWING HAS BEEN PREPARED FOR PRELIMINARY INFORMATION ONLY. THE DESIGN INFORMATION AND ALL ASSOCIATED AREAS IS SUBJECT TO MEASURED SURVEY, DESIGN DEVELOPMENT, STATUTORY UNDERTAKER SEARCHES, PLANNING APPROVAL, DETAILED DESIGN DEVELOPMENT, BUILDING REGULATIONS APPROVAL, FIRE ENGINEER REVIEW AND ASSESSMENT BY A STRUCTURAL ENGINEER. THIS DRAWING DOES NOT IMPLY CONFIRMATION OF LEGAL BOUNDARIES OR TITLE.

INFORMATION CONTAINED IN THIS DRAWING IS THE SOLE COPYRIGHT OF METASHAPE ARCHITECTS LTD AND IS NOT TO BE REPRODUCED WITHOUT PERMISSION. REFER TO FIGURED DIMENSIONS ONLY.



- Existing building fabric
- Proposed new walls

METASHAPE | ARCHITECTS

STATUS
PLANNING

PROJECT
66a HIGH STREET
NEW MALDEN KT3 4ET

SHEET TITLE
SECTION D-D PROPOSED

SCALE
As indicated @ A1

DATE
12/03/25

DRAWN
LL

REVIEWED
IL

JOB NO.
2022-012

SHEET NUMBER
223

REVISION
D

Section D-D Proposed
1 : 50

